

1

2

3

4

5

6

7

8

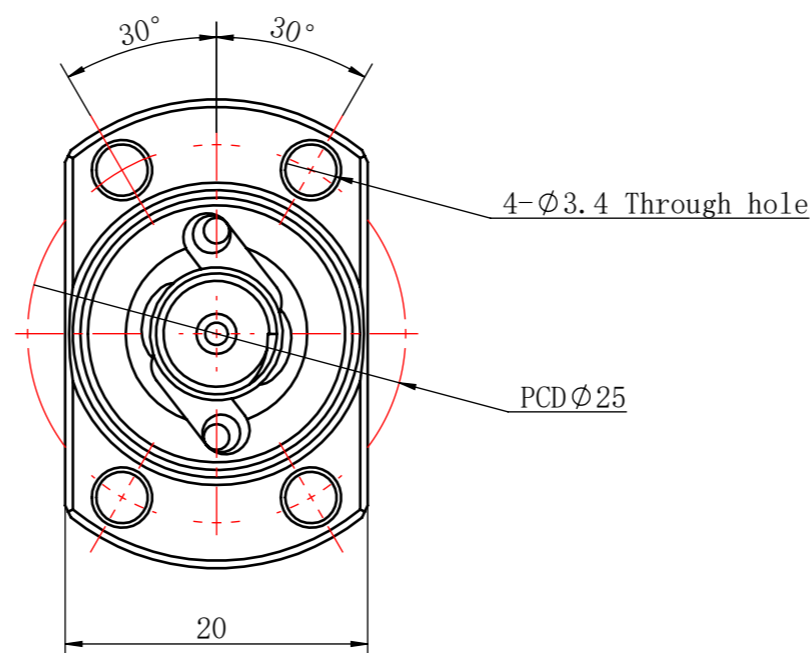
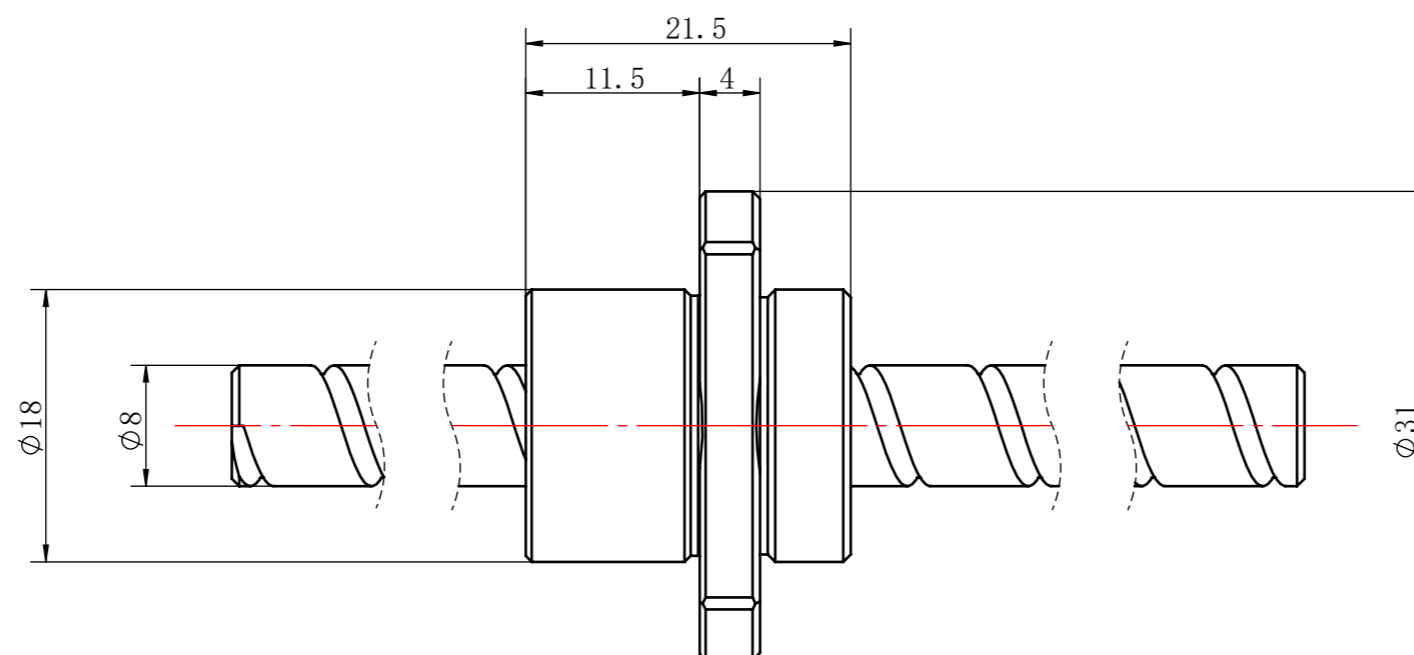
CHANGE

Revision

Date

Description

Approval



LINEAR		SPECIFICATION				CUSTOMER		
0.5~3	$\pm 0.1$	B. C. D	$\phi 8.4$	BALL SIZE	$\phi 1.588$	C. MODLE		
>3~6	$\pm 0.1$	SPACER BALL		LEAD	8	MODLE FBG0808		
>6~30	$\pm 0.2$	ALLOW ROTATION NUMBER		LEAD ANGLE		NAME BALL SCREW		
>30~120	$\pm 0.3$	LUBRICANT		NUMBER OF TURNSxROWS		WEIGHT		
>120~400	$\pm 0.5$	O. C.	MAX. AXIAL Ca	THREAD DIRECTION/NUMBER OF THREAD		DESIGN		
>400~1000	$\pm 0.8$		MAX. RPM		DYNAMIC Ca (N)	REV.		
>1000~2000	$\pm 1.2$	L. A.			STATIC Coa (N)	SCALE		
ANGULAR					PRELORD TORQUE		CHECK	
~10	$\pm 1^\circ$				AXIAL PLAY		TOTAL:	
>10~50	$\pm 30'$				SCREW MATERIAL		PAGE:	
>50~120	$\pm 20'$		NUT MATERIAL		UNITS mm			
>120~400	$\pm 10'$	ACCURACY GRADE:			RATIFY			
						JIANGSU DINGS' INTELLIGENT CONTROL		

1

2

3

4

5

6

7

8