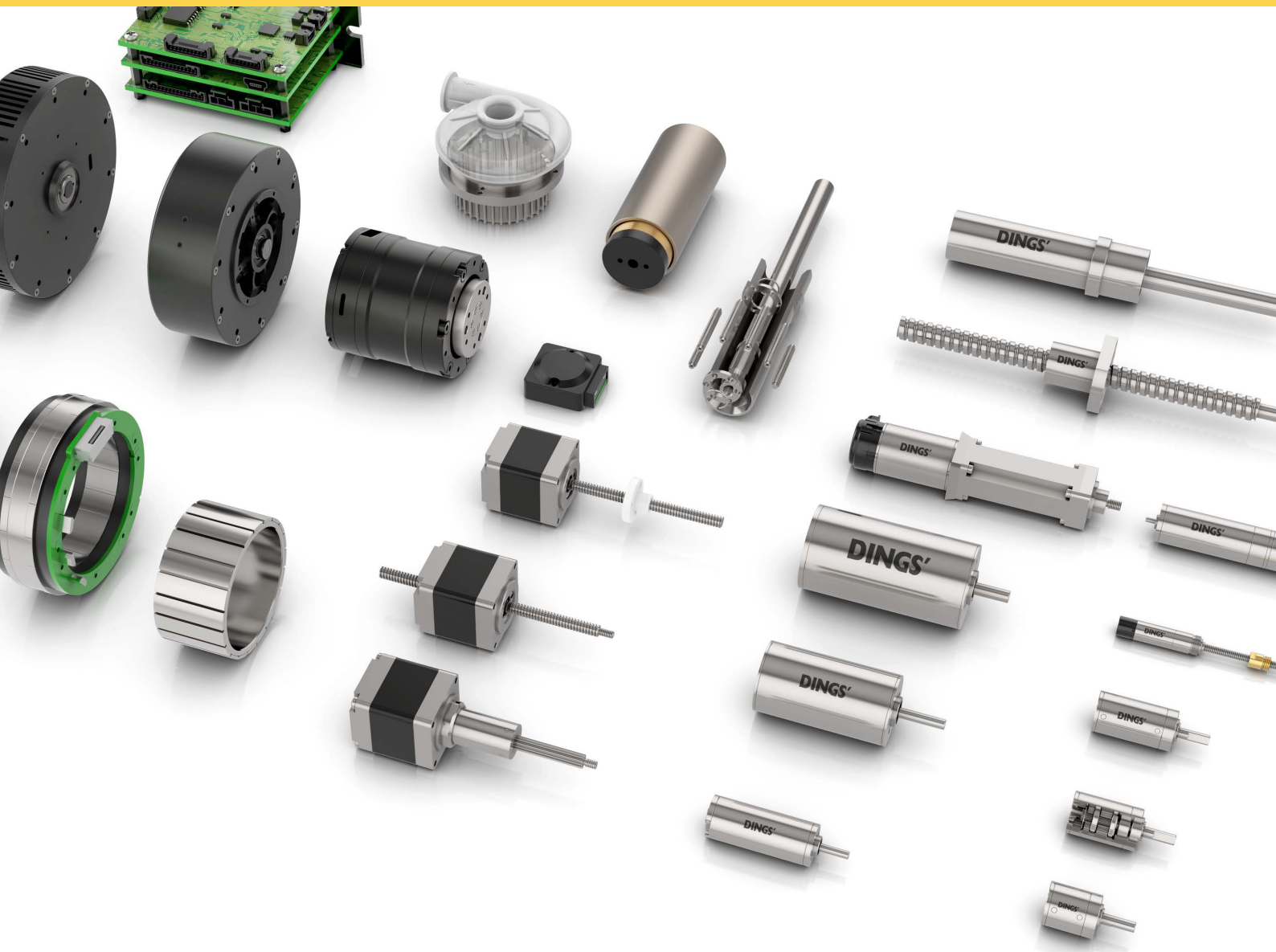


# DINGS'

Precision Motion Specialist

## SIMPLE BROCHURE

Jiangsu DINGS' Intelligent Control Technology Co., Ltd.





Founded in 2008, Jiangsu DINGS' Intelligent Control Technology Co., Ltd. is guided by the philosophy, **"Quality stems from responsibility, and details determine success."**

As a global leader in precision linear motion, DINGS' delivers a comprehensive portfolio of precision stepper, DC and BLDC motors, voice coil motors, lead and ball screw linear actuators, PMSM motors for eco-mobility, and advanced motion controllers — setting new benchmarks in the global motion control market.

## SCALE

300+ Advanced Machining Equipment



40+ Automated Assembly Lines



100+ Precision Testing & Analysis Systems



140+ Patents & Intellectual Properties



## GROWTH

- 2008 Company Founded & DINGS' Brand Established

---

- 2010 DINGS' Motion USA Established

---

- 2016 DINGS' Korea Established

---

- 2019 Joined LEILI Group

---

- 2021 Changzhou Intelligent Manufacturing Plant Established  
Listed on China NEEQ Market

---

- 2022 Korea R&D Center Established

---

- Listed on Beijing Stock Exchange [Stock Code: 920593]

---

- 2023 DINGS' Korea Converted to Corporate Entity  
DINGS' Japan Established

---

- 2024 New Headquarters & Plant Established  
DINGS' Motion Europe Established

---

- 2025 Thailand Manufacturing Facility Established

## CERTIFICATIONS

 <b>9001</b> Quality	 <b>14001</b> Environmental	 <b>45001</b> Health & Safety	 <b>13485</b> Medical Device Quality
 <b>ISO/IEC 17025</b> Laboratory Accreditation	 <b>IATF16949</b> Automotive Quality	 <b>IPMS</b> Intellectual Property	
 <b>CE</b> Safety Standards	 <b>RoHS COMPLIANT</b> Environmental Standards - RoHS	 <b>REACH NPS</b> Environmental Standards - REACH	

## PRODUCT WARRANTY

Warranty period: 1 year from shipment.  
Free repair is provided for defects in materials or workmanship under normal use.

Warranty does not apply to:

- Warranty expiration or damaged/lost nameplates
- Improper installation or operating conditions
- Unauthorized disassembly or modification
- Repairs conducted outside of official service channels
- Force majeure, including natural disasters

DINGS' is committed to quality, reliability, and responsibility — delivering high-performance motion solutions built on precision engineering.

## DINGS' PRODUCT LINEUP



### Stepper Lead Screw Linear Actuator

External · Non-captive · Captive · Kaptive  
14 - 86 mm  
Standard · Custom options

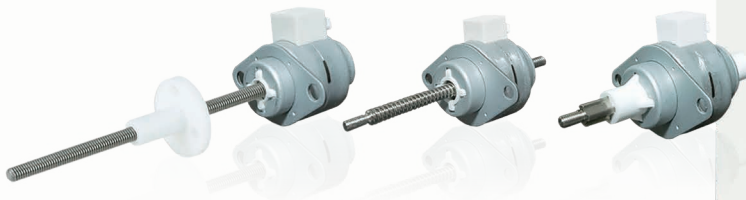
[Options] Encoder, Brake, Manual Knob  
Driver, Anti-backlash Nut



### Stepper Ball Screw Linear Actuator

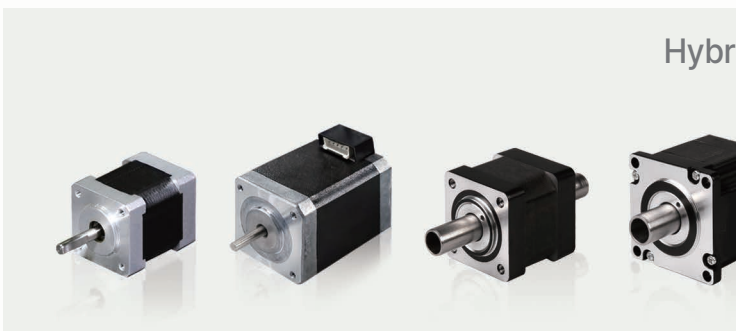
External  
14 - 57 mm  
Integrated Guide DLG series

[Options] Encoder, Brake, Manual Knob, Driver



### PM Stepper Linear Actuator

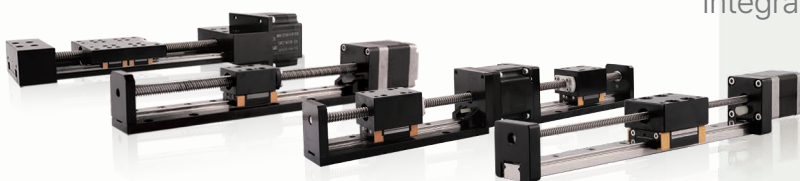
External · Non-captive · Kaptive  
15, 20, 25, 36, 46 mm  
Standard · Custom options



### Hybrid Rotary & Hollow Shaft Stepper Motor

[2-phase] 14 - 86 mm  
[5-phase] 28, 42, 60 mm  
Standard · Custom options  
Single shaft · Double shaft

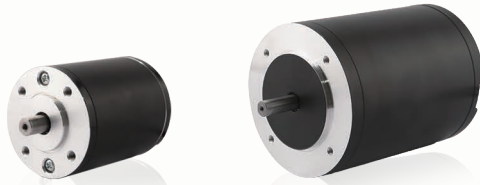
[Options] Encoder, Brake, Gearbox, Driver



### Linear Module Series

Integrated modular design: DLM / LR-DLM  
Lightweight · Cost-effective: DSM  
High precision: DSLM  
High rigidity · Precision: DWM

## DINGS' PRODUCT LINEUP



### Brushed DC Motor

Ø42, 50, 63, 80 mm  
Rated speed: 1,700 - 3,200 rpm  
High-speed operation · Precision control  
[Options] Encoder, Gearbox, Integrated lead screw



### Brushed Coreless DC Motor

Ø8, 10, 16, 25, 40 mm  
Rated speed: 360 - 10,000 rpm  
Low inertia · High response  
High efficiency · Precision control  
[Options] Encoder, Integrated gearbox



### Slotted Brushless DC Motor

Ø16 - 42 mm  
□42 - 110 mm  
Rated speed: 1,500 - 12,600 rpm  
[Options] Encoder, Gearbox, Hall sensor  
Integrated lead screw



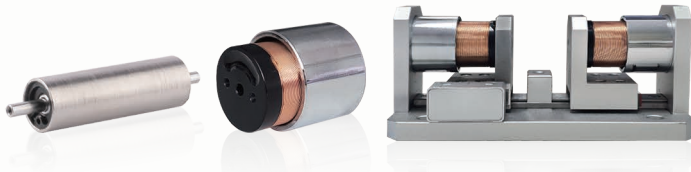
### Slotless Brushless DC Motor

Ø6 - 42 mm  
Rated speed: 5,400 - 51,300 rpm  
91% efficiency · High-speed operation  
Standard · Hollow shaft · Integrated screw  
[Options] Encoder, Gearbox, Hall sensor  
Integrated lead screw



### Coreless Push Rod Actuator

Ø10, 12, 16, 22 mm  
Rated thrust: 80 - 750 N  
High-precision linear motion ( $\pm 0.08$  mm)  
Standard · Custom stroke available  
[Options] Encoder, Integrated gearbox



### Voice Coil Motor · Actuator

Ø12.7 - 60 mm  
Standard · High-torque type  
Customizable size, stroke, and thrust

[Modular integrated solution] VCM + Driver  
+ Linear encoder (1 µm) + Mechanism module



### Frameless Motor

25, 38, 43, 50, 60, 70, 85, 115 mm  
Rated speed: 1,400 - 22,650 rpm  
High-torque modular design  
Low cogging · Compact structure

[Options] Built-in Hall & temperature sensors,  
Encoder optional



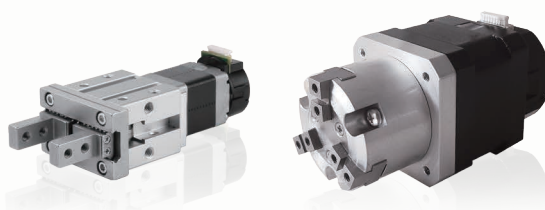
### Outer Rotor Motor

20, 32, 42 mm  
Rated speed: 2,760 - 5,170 rpm  
Rated torque: 7.59 - 220 mN·m  
Compact high-torque design  
Low vibration · Wide speed control range



### Small DC Servo Motor

25 mm  
Rated torque: 35 - 105 mN·m  
High-precision positioning  
(17-bit absolute encoder)  
IP54 protection rating



### Gripper

20 - 42 mm stepper  
6 · 12 mm stroke  
Max. 371 N gripping force  
2-Finger · 3-Finger

[Options] Encoder · Torque control driver

## DINGS' PRODUCT LINEUP



### Motion Controller

Standalone · Integrated drive type  
Pulse · RS485 · CANopen · EtherCAT  
Open-loop · Closed-loop control



### Customization Options

Encoder · Brake · Anti-backlash nut  
Manual knob · Teflon coating · IP rating  
Precision planetary gearbox  
(1-4 stages, low backlash)



### Screw Assemblies

Lead screw:  $\varnothing 2.5 - 15.875$  mm  
Ball screw:  $\varnothing 4 - 25$  mm  
Planetary roller screw:  $\varnothing 8 - 25$  mm  
Push rod linear module

## PARTNER BRANDS



[Powered by MYACTUATOR]

### Robot Joint Servo Actuator

BLDC integrated joint module  
Standard · Hollow · Integrated drive  
Direct · Planetary · Harmonic drive



[Powered by Dongguan Silent]

### Micro Precision Gearbox · Gearmotor

Ø4.3 - 62 mm

1 - 5 stages · Wide gear ratio range  
Low noise · Low backlash design  
Precision · High-speed operation



[Powered by HKX]

### DC Servo Linear Actuator

DC servo ball screw actuator, MBS series  
Guided DC servo cylinder, MEC series



[Powered by ADT]

### Micro BLDC Blower

High-efficiency BLDC drive  
Up to 50,000 hours lifespan  
Biomedical applications



[Powered by Welcon Systems]

### DC Servo Drive

High-precision · High-response control  
Supports multiple motor · encoder options  
CE · TUV certified reliability





ENG Web



Partners Web



YouTube



## HEADQUARTERS

### Jiangsu DINGS' Intelligent Control Technology Co., Ltd.

No. 2850 Luheng Road, Changzhou Economic Development Zone, Jiangsu Province, China

Tel : +86-519-85177826

E-mail : [info@dingsmotion.com](mailto:info@dingsmotion.com)

[www.dingsmotion.com](http://www.dingsmotion.com)

## GLOBAL MANUFACTURING LOCATION

### DINGS' Intelligent Control Technology (Thailand) Co., Ltd.

42/29 Moo 4, Uthai Subdistrict, Uthai District, Phra Nakhon Si Ayutthaya 13210, Thailand

Tel : +66 64-505-9951

## SUBSIDIARIES

### DINGS' Motion USA

355 Cochrane Circle Morgan Hill,  
CA 95037

+1-408-612-4970

[sales@dingsmotionusa.com](mailto:sales@dingsmotionusa.com)

[dingsmotionusa.com](http://dingsmotionusa.com)

### DINGS' Motion Europe

4 Avenue du Grand Trémoutier  
44120 Vertou, France

+33-(0)6-41-37-80-07

[sebastien@dingsmotion.com](mailto:sebastien@dingsmotion.com)

[fr.dingsmotion.com](http://fr.dingsmotion.com)

### DINGS' Korea Co., Ltd.

C-702, 158 Haneulmaeul-ro, Ilsandong-gu,  
Goyang-si, Republic of Korea

+82-31-994-0755

[daniel@dingsmotion.com](mailto:daniel@dingsmotion.com)

[dingsmotion.kr](http://dingsmotion.kr) / [dkps.co.kr](http://dkps.co.kr) / [en.dkps.co.kr](http://en.dkps.co.kr)

## INTERNATIONAL OFFICES

### DINGS' Shenzhen Office

Room 1105, Block C, CIMC Industry Park,  
Guangming District, Shenzhen, China

[info@dingsmotion.com](mailto:info@dingsmotion.com)

### DINGS' JAPAN

101, 2-27-18, Nishi-kojiya, Ota-ku, Tokyo  
144-0034 JAPAN

+81-90-7730-0034

[tsukahara@dingsmotion.com](mailto:tsukahara@dingsmotion.com)

[jp.dingsmotion.com](http://jp.dingsmotion.com)

Catalog Issued: May 2026

© DINGS'. All rights reserved

No part of this catalog may be reproduced or distributed without prior written consent from DINGS'. Specifications, features, and designs are subject to change without prior notice for product improvement.

DINGS' reserves the right of final interpretation of this catalog and its products.